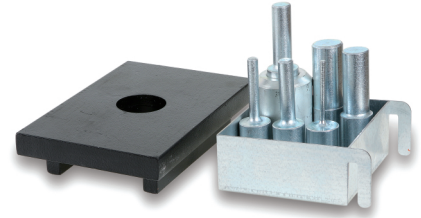



**3027/KP**

**Set of pin punches and plate for press item 3027**

Ø pin punches: 5-10-14-18-24-29 mm



	art.	
<b>030270510</b>	3027/KP10	3027 10
<b>030270520</b>	3027/KP20	3027 20
<b>030270530</b>	3027/KP30	3027 30
<b>030270550</b>	3027/KP50	3027 50